



Tribhuvan University
Birendra Multiple Campus
Bharatpur, Chitwan

Official Website of Campus: <https://bimc.tu.edu.np/>

ANNUAL REPORT

Fiscal Year 2081/082



Acknowledgement

We express our sincere gratitude to the entire teams of Birendra Multiple Campus for their invaluable consultation, prompt responsiveness, and provision of information that greatly contributed to the preparation of the report. We extended special thanks to Assoc. Prof. Prem Sagar Bhandari, Campus Chief, for his constructive enthusiasm, unwavering support, and insightful suggestion in guiding the development of this report.

Additionally, we deeply appreciate to Mr. Pradip Subedi for preparation of report, technical support, assisting in data integration and formatting of the report, which greatly enhanced in its preparation and publication.

Academic Report Publication Team

March 12, 2026

Executive Summary

Birendra Multiple Campus, formerly known as Birendra Intermediate Arts College, was established on the 15th of Baishakh, 2022 BS in Chitwan district of Nepal. It is named after the late King Birendra. The campus was founded through the collective efforts of academicians, social workers, guardians, donors, and local institutions to meet the educational needs of the growing population in the region after it was announced for settlement in 2011 BS.

The vision of Birendra Multiple Campus is to become one of the leading academic institutions in the nation, emphasizing academic excellence, responsible citizenship, personal growth, and ethical leadership. Its mission is to educate students to become responsible citizens and ethical leaders in both local and global communities, empowering graduates to lead meaningful lives and pursue productive careers.

The campus's primary goal is to develop into a physically well-equipped and academically outstanding center with an advanced research hub. To achieve this, the institution focuses on promoting academic and research activities, managing income-generating programs, and maintaining its physical infrastructure to support an effective learning environment. It offers a diverse range of undergraduate and postgraduate programs in various disciplines, including humanities, science, management, and education.

Committed to fostering a research-oriented environment, the campus actively encourages research activities among faculty members and students. Various committees, such as the Research Management Committee and the Education Management Information System Committee, play crucial roles in enhancing efficiency, collaboration, and decision-making processes. To support students' educational needs, Birendra Multiple Campus is equipped with state-of-the-art facilities, including a modern library integrated with specialized Mitra ERP software, subject-specific laboratories for sciences, and dedicated labs for Microbiology, Geology, and Computer Studies. Additionally, the campus promotes scholarships to provide financial assistance and encourage academic excellence.

Financially, the campus generates income from multiple sources, including funding from Tribhuvan University for regular programs and revenue from activities such as rent, fees, grants, and donations from local government bodies. Over the years, the institution has

experienced fluctuations in income and expenditure. Birendra Multiple Campus places significant emphasis on research and publication opportunities for faculty and students. It allocates a budget for research, provides grants for mini-research projects, and supports article publications in indexed international journals. The institution also takes pride in maintaining a gender-balanced student population, ensuring a conducive learning environment for both male and female students. The majority of students are enrolled in yearly programs, while a smaller percentage pursues semester-based courses.

Looking ahead, Birendra Multiple Campus remains dedicated to academic excellence, research, and community engagement. It seeks continuous support, advice, and collaboration from students, guardians, agencies, social workers, local government, and well-wishers to enhance its impact on society and the education sectors.

Table of Content

Acknowledgements	i
Executive Summary	ii
1. Background	8
1.1 Organizational Structure.....	9
1.2 Infrastructure.....	10
1.3 Library.....	12
1.4 Laboratory Facilities.....	12
2. Educational Programs	13
3. Faculties and Departments.....	14
4. Teaching and Non-Teaching Staff.....	15
5. Distribution of Student Seat available in Different Academic Programs	15
6. Research & Publication	16
7. Student Enrollment	19
7.1 Faculty Wise Enrollment	19
7.2 Gender Wise Enrollment.....	20
7.3 Yearly and Semester-wise Enrollment.....	21
8. Student Graduation	21
9. Student Scholarship	22
10. BMC Alumni Association.....	23
11. Campus Committees Formation	24
11.1 Campus Management Committee	24
11.2 Campus Executive Committee.....	25
11.3 SAT Committee	25
11.4 Internal Quality Assurance Committee (IQAC)	26
11.5 Academic Audit and Public Information Committee	26
11.6 Birendra Campus Bulletin Publication Committee.....	27
11.7 Education Management Information System Committee.....	27

11.8 Student Quality Circle.....	28
11.9 Human Resource Management Committee	28
11.10 Grievance Re-Addressing Committee	29
11.11 Laboratory Management Committee	29
11.12 Internal Examination and Evaluation Committee.....	30
12. Financial Management.....	30
12.1 Fixed Assets	30
12.2 Operating Expenses and It's Trend	31
12.3 Accounting System	34
13. Bases for the financial stability of the campus	34
14. SWOT Analysis of Birendra Multiple Campus	34
14.1 Strengths of the Campus	34
14.2 Weakness of the Campus	35
14.3 Opportunities of the Campus	36
14.4 Threats of the Campus	36
15. Foundation and priorities for the institutional development of Campus.....	36

List of Tables

Table 1: Detail Infrastructure of Campus	11
Table 2: Books availability at the Library of Campus	12
Table 3: Educational programs offered by Birendra Multiple Campus.....	13
Table 4: List of faculties and departments, 2024.....	14
Table 5: Number of faculty members with designation and qualification, 2026.....	15
Table 6 Number of the non-teaching staff of the institution at present, 2026	15
Table 7: Seat available in different academic programs at Birendra Multiple Campus	16
Table 8: Students enrollment in yearly and semester program, 2026.....	21
Table 9: Number of Student Who Received Scholarship	23
Table 10: Internal and Regular Income and Expenditure of Campus.....	31

List of Figures

Figure 1: Number of students enrolled in different faculties with sex-wise distribution,2026.....	20
Figure 2: Number of students enrolled in different academic level with sex-wise distribution, 2026.....	21
Figure 3 : Graduates from the campus	22
Figure 4: Trend Analysis of Number of Internal and Regular Income of Last 3 Year	32
Figure 5: Trend Analysis of Number of Internal and Regular Expenditure of Last 3 Year.....	34

Acronyms

B.Ed	Bachelor of Education
BIMC	Birendra Multiple Campus
B.Sc	Bachelor of Science
BA	Bachelor of Arts
BBA	Bachelor of Business Administration
BBS	Bachelor of Business Studies
BCA	Bachelor of Computer Applications
BICTE	Bachelor in Information & Communication Technology Education
BIT	Bachelor in Information Technology
BMC	Birendra Multiple Campus
BS	Bikram Sambat
CSIT	Computer Science and Information Technology
EMIS	Education Management Information System
ERP	Enterprise Resource Planning
FoHSS	Faculty of Humanities and Social Sciences
HE	Higher Education
IT	Information Technology
ISc	Intermediate of Science
M.Phil	Master of Philosophy
M.Sc	Master of Science
MA	Master of Arts
MBS	Master of Business Studies
Ph.D.	Doctor of Philosophy
TU	Tribhuvan University
UGC	University Grant Commission

1. Background

Birendra Multiple Campus was established on the 15th of Baishakh, 2022 BS as 'Birendra Intermediate Arts College', named after the late King Birendra. It was initiated and developed by academicians, social workers, guardians, donors, and local institutions to meet the educational needs of the growing population in Chitwan, Nawalparasi and Tanahun districts. The college initially faced challenges as it did not have its own building and operated on the premises of Chitwan High School with only 14 students. It later relocated to a rented house in Narayangarh.

Despite various obstacles, the college obtained 10 Bigaha of land from HMG in 2028 and shifted to its own building in 2032 BS. The building was inaugurated by Late King Birendra on the 6th of Marg, 2034 BS. With this development, the college was able to offer Bachelor level programs starting from 2035 BS. In 2040, the college expanded its offerings to include I.Sc. and became the first multiple campus in the Chitwan district. Since then, the college has continued to grow both physically and academically.

Notably, the college took a significant step forward in its academic activities by introducing a Master's program in Economics in 2045, followed by B.Sc. in 2050 and M.A. in Nepali in 2053. From then on, the college has continuously added various Bachelor's and Master's programs without interruption.

Since its establishment in 2022 BS, Birendra Multiple Campus has become a role model academic institution. Over the years, it has educated numerous individuals from different parts of the country, contributing to the enlightenment and development of society through knowledge, skills, and inspiration. The college aims to continue leading academically, providing quality education that meets the demands of the 21st century. The college expresses sincere gratitude to all those who directly or indirectly contributed to its establishment, growth, and development, shaping it into its current state. It looks forward to valuable advice, love, and support from students, guardians, agencies, social workers, local government, and well-wishers in the future.

Vision

Birendra Multiple Campus strives to be one of the nation's leading campuses, emphasizing academic brilliance, accountable citizenship, personal growth, and ethical leadership.

Mission

Birendra Multiple Campus (BIMC) educates students for responsible citizenship and ethical leadership in local and global communities and empowers graduates to pursue meaningful lives and productive careers.

Goal

The Goal of the Birendra Multiple Campus is to make the physically well-equipped and academically excellent Centre with an advanced research hub.

Objectives

The campus has several objectives related to developing and improving education at Birendra Multiple Campus, with a focus on promoting academic and research activities, managing income-generating programs, and handling the physical properties of the campus.

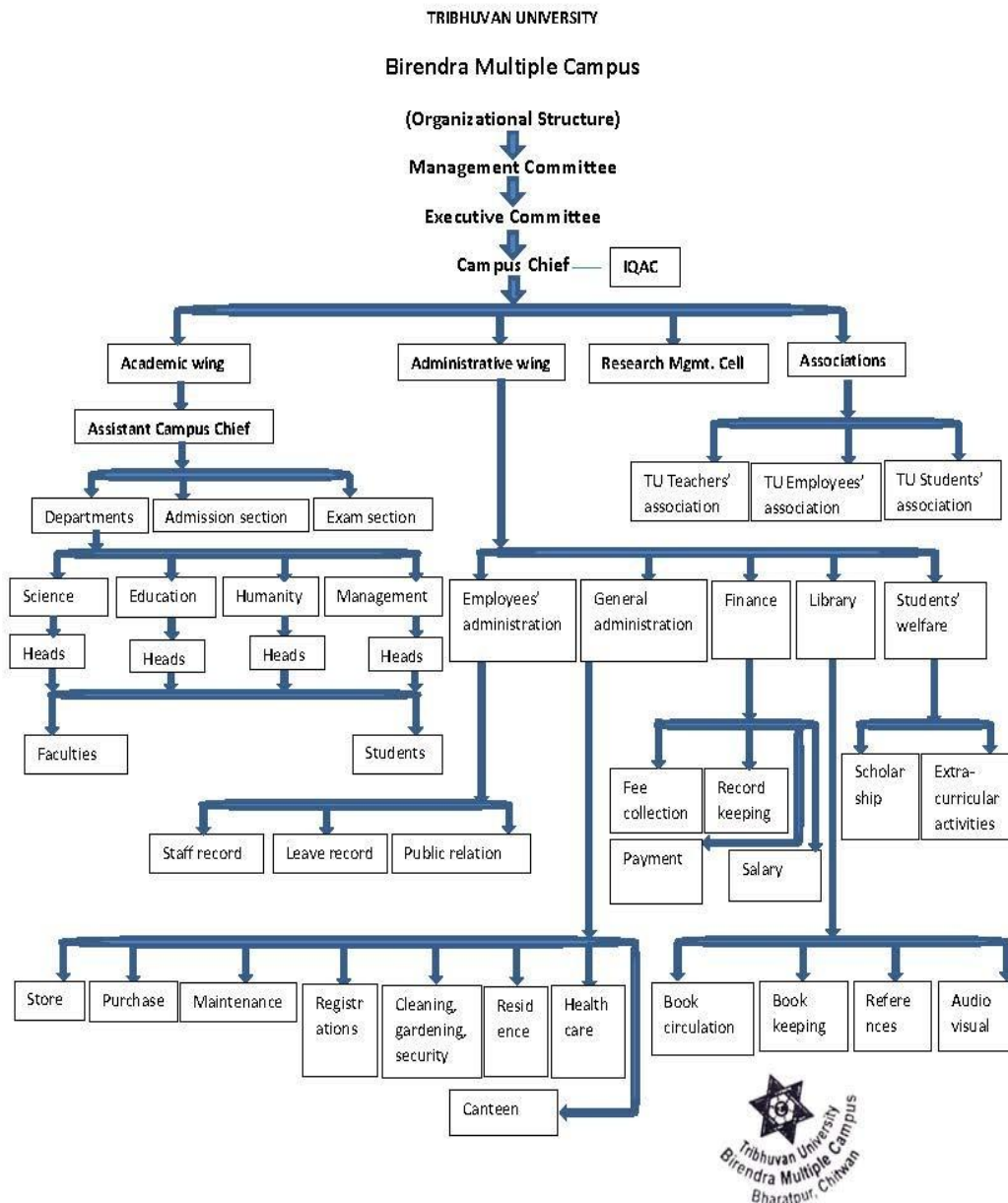
- To ensure accessible, affordable, and inclusive education for students from diverse socio-economic and geographic backgrounds across Nepal.
- To promote a culture of academic rigor, critical thinking, and interdisciplinary research, international standards across all faculties to contribute to national development with Nepal's national priorities in areas such as education, environment, governance and economic development.

Overall, Birendra Multiple Campus aims to provide quality education and create an environment by making academic and research excellence. It envisions contributing to society's overall development and betterment by producing skilled graduates and fostering a culture of intellectual growth and inquiry.

1.1 Organizational Structure

An organizational organogram, also known as an organizational chart or hierarchy chart, is a visual representation of the structure and relationships within an organization. It illustrates the positions, roles, and reporting lines of individuals or departments within the organization.

The organogram of Birendra Multiple Campus as follows:



1.2 Infrastructure

It's great to hear that various physical infrastructure projects were accomplished with the help of local people, guardians, educationalists, local institutions, and government authorities. Collaborative efforts are essential for the development and improvement of communities.

Table 1: Detail Infrastructure of Campus

S.N.	Name of Building	Purpose	Financial source	Condition
1	Main Building (Humanities Building) 2-storied building 23 Rooms	Classroom and Office of Asst. Campus Chief, Departments, Humanities and Management	Chitwan District Panchyat, Udhog Banizya Sanga Narayani Zone Educational Committee Donation from T.U. And others	Poor
2	Science Building (2042) 2-storied building with 12 rooms	Classroom and laboratory Office of Asst. Campus Chief, Dep. of Science	Chitwan District Panchyat Bharatpur Nagar Panchyat Narayani Zone assistant unit and others	Poor
3	Administrative building (2056) 6 rooms	Office of Campus Chief Different Administrative Departments	Campus Development Kosh Narayani Zone Game Development Kosh Chitwan District Panchyat Bharatpur Nagar Panchyat Other Donations	Poor
4	Master Degree Building (2056) 8 rooms	Office of Assistant Campus Chief Classrooms	Internal source of campus	Good
5	Nepal-Ind Relationship Library	Library (2-storied)	Indian Embassy	Good
6	M.Sc. Physics and Chemistry Laboratory	Laboratory (16rooms)	T.NJ. Donation (Under the Special Development Program)	Good
7	Botany Lab (5rooms)	Laboratory	Donation from T.U.	Good
8	Microbiology Lab 2067 (6 rooms)	Laboratory	T.U. Donation (Under the Special	Good
9	Residence of Campus Chief	Residence	Local and internal source	Poor
10	Residence of teachers and staff	Residence	Local and internal source	Poor
11	Business Building Main Gate	Shopping complex 6 shutters	Internal source	Good
12	Business Building Back Side	Shopping complex 48 shutters	Internal source	Good
13	Canteen	Canteen	Internal source	Good
14	Cycle Stand	Cycle stand	Indian Embassy and Internal source	Good
15	Playing Ground	Play	Local and internal source	Good
16	Three New Buildings at Naubigaha	Classroom (53 Rooms)	Local and UGC and DDO	Good

1.3 Library

The campus boasts a separate, state-of-the-art library facility equipped with a sophisticated computerized system featuring specialized Mitra ERP software. This modern library setup includes Digital Resources Management and Integration with Campus Systems. Such advanced technologies reflect the institution's dedication to providing a contemporary and effective learning environment for its community. As a result, students and researchers can immensely benefit from the wide array of resources and services offered through this system. A total of 68744 books are available for teaching and learning activities. The library runs from morning 6:00 AM to 6:00 PM with number of 4 staff.

Table 2: Books availability at the Library of Campus

Books Category	Books Category
Nepali	Education
Economics	Mathematics
Political Science	Physics
English	Chemistry
History	Botany
Culture	Biology
Management	Zoology
Statistics	Geography
Sociology	Population
Philosophy	Research
Journalism	Tourism
Dictionary	Religion
Computer Science	Microbiology
Environmental Science	Applied Science
Medical Science	Miscellaneous
Total No. of Books	68744

1.4 Laboratory Facilities

Since the initiation of I. Sc. in the year 2040 B.S., the campus has established subject-wise laboratories for Physics, Chemistry, and Biology in the science building. With the introduction of B.Sc. classes in 2050 B.S., these laboratories were expanded, and two additional laboratories for Zoology and Botany were set up. Presently, at the Naubigha building, modern laboratories cater to M.Sc. Physics and Chemistry students and

researchers, fully equipped with apparatus, equipment, chemicals, and furniture. Moreover, these labs feature dedicated spaces for a darkroom, balance room, and storage.

Furthermore, the campus has also created separate laboratories for Microbiology, Geology, and Computer studies. To further enhance the facilities, there are plans to consolidate all these laboratories into a dedicated Science and Technology building at Naubigha. The following are the laboratories:

- Physics Lab (4 for B.Sc., 3 for M.Sc.)
- Chemistry Lab (2 for B.Sc., 3 for M.Sc. [Organic/Inorganic])
- Botany Lab (Total- 2)
- Zoology Lab (Total - 3)
- Microbiology Lab (Total -2)
- Geology Lab (Total - 2)
- Computer Lab (Total- 3 [with 100 Desktop Computers])
- Statistics Lab (Total - 1 [equipped with 7 Desktop Computers])

2. Educational Programs

Birendra Multiple Campus offers a diverse range of educational programs to cater to the academic needs of its students. These programs are designed to provide quality education and prepare students for various careers and higher studies. The educational programs offered by Birendra Multiple Campus are as follows:

Table 3: Educational programs offered by Birendra Multiple Campus

Name of the Program	Year
Bachelor's Degree in Arts (B.A.)	2035 B.S.
Master's Degree in Economics (M.A. Eco)	2045 B.S.
Bachelor's Degree in Science (B.Sc.)	2050 B.S.
Master Degree in Nepali (M.A. Nepali)	2053 B.S.
Master's Degree in English (M.A. English)	2062 B.S.
Bachelor in Business Studies (BBS)	2062 B.S.
Master in Business Studies (MBS)	2064 B.S.
Master in Physics (M.Sc. Physics)	2064 B.S.
Master's Degree in Arts (M.A. Sociology)	2065 B.S.
Master in Arts Population Studies (MA Population)	2066 B.S.
Master in Chemistry (M.Sc. Chemistry)	2066 B.S.
Bachelor's Degree in Science, Microbiology	2068 B.S.
Bachelor's Degree in Computer Science and Information Technology (B.Sc. CSIT)	2069 B.S.
Bachelor's Degree in Geology	2069 B.S.

Bachelor in Business Administration (BBA)	2073 B.S.
Bachelor in Computer Application (BCA)	2074 B.S.
Bachelor in Information Technology (BIT)	2076 B.S.
Bachelor in Information and Comm. Technology in Education (BICTE)	2077 B.S.
Postgraduate Diploma in Education (PGDE)	2080
M.Ed. (Nepali, English, EPM)	2081

After the phase-out of Proficiency Certificate Level Arts (I.A.) and Proficiency Certificate Level Science (I.Sc.), Birendra Multiple Campus continues to focus on updating and introducing new courses in Bachelor's and Master's programs that contribute to academia and society. The campus remains committed to providing quality education that aligns with the evolving needs of the students and the job market.

The future aim of Birendra Multiple Campus is to expand its educational offerings and enhance the learning opportunities for its students. By introducing two new courses, namely, MBA in Management and M.Sc. in Computer Science in Science and Technology, the campus aims to provide specialized and advanced education in these fields. These additions will enable students to pursue their academic and career goals with a focus on management and computer science, which are highly sought-after areas in today's professional world.

3. Faculties and Departments

Birendra Multiple Campus offers undergraduate and graduate programs under different faculties and departments. The campus has experienced and qualified faculty members who provide quality education and guidance to students. There are 21 Program / departments under different faculties.

Table 4: List of faculties and departments, 2024

<u>Science and Technology</u>	<u>Humanities and Social Sciences</u>
Department of Botany	Department of Population Studies
Department of Chemistry	Department of Sociology
Department of Geology	Department of Economics
Department of Microbiology	Department of Nepali
Department of Statistics	Department of English
Department of Physics	
Department of Zoology	
Department of Mathematics	
<u>Management</u>	<u>Education</u>
Department of Management (Account/Marketing/Finance)	Department of Education

4. Teaching and Non-Teaching Staff

Teaching staff members are responsible for delivering education and facilitating the learning process for students. They are directly involved in imparting knowledge, conducting classes, and assessing students' progress. The total number of teaching staff of Birendra Multiple Campus is as follows:

Table 5: Number of faculty members with designation and qualification, 2026

Permanent / Full time	PhD		M. Phil		Master's		Total		Grand Total
	M	F	M	F	M	F	M	F	
Professor	2				2		4		4
Associate Professor/Reader	5				6		11		11
Assistant Professor/Lecturer	13	1	3	2	53	6	69	9	78
Demonstrator					1				1
Teaching Assistant/Instructors	3		2		43	9	48	9	57
Sub-Total	23	1	5	2	105	15	133	18	151
Part Time Contract	1				43	12	44	12	56
Teaching Assistant/Instructors									0
Sub – Total	1				43	12	44	12	56
Grand Total	24	1	5	2	148	27	177	30	207

Non-teaching staff members are crucial for the administrative and operational aspects of the institution. They do not directly participate in classroom teaching but contribute to the overall functioning and support services. The total non-teaching staff of Birendra Multiple Campus is as follows:

Table 6 Number of the non-teaching staff of the institution at present, 2026

Staffs	Distribution of Staff by Gender		
	Male	Female	Total
Officers	3	1	4
Head/Assistants	12	7	19
Support/help staff	6	3	9
Contract (Wages Basis)	8	2	10
Total	29	13	42

5. Distribution of Student Seat available in Different Academic Programs

Birendra Multiple Campus in Bharatpur, Chitwan, Nepal, offers a wide range of academic programs designed to provide quality education and guidance across various fields of study. The campus provides undergraduate and graduate programs in humanities, management,

science, and education. With experienced faculty members and well-equipped facilities, it strives to deliver a comprehensive learning experience, ensuring students receive a well-rounded education in multidisciplinary subjects.

Table 7: Seat available in different academic programs at Birendra Multiple Campus

Yearly Programs

S.N.	Faculty	Program	Adm. Criteria
1	Management	Bachelor in Business Studies (BBS)	Open
2	Education	B.Ed. (Health and Physical/English/Nepali)	Open
3	Science	Bachelor of Science (B.Sc.)	Entrance
		Physical Group	”
		Biology Group	”
		Microbiology	”
	Geology	”	
4	Humanities	B.A. (Nepal/English/Economics/Sociology/ Rural Development/Population/ Mathematics)	Open

Semester Programs [Bachelor]

S.N.	Faculty	Program	Adm. Criteria
1	Management	Bachelor in Business Administration (BBA) – 66 Seats	CMAT Merit
2	Education	Bachelor of Education in Information Communication Technology (BICTE) - 36 Seats	Entrance Merit
		Postgraduate Diploma in Education (PGDE)	Entrance Merit
3	Science	Bachelor of Science in Computer Science and Information Technology (B.Sc. CSIT) - 72 Seats	Entrance Merit
		Bachelor in Information Technology (BIT) - 36 Seats	Entrance Merit
4	Humanities	Bachelor in Computer Application (BCA) - 35 Seats	Entrance Merit
4	Education	M.Ed. (English/Nepali/EPM)	Entrance

Semester Programs [Masters]

S.N.	Faculty	Programs	Adm. Criteria
1	Management	Master in Business Studies (MBS)	CMAT
2	Science	M.Sc. Physics	Entrance
		M.Sc. Chemistry	Entrance
3	Humanities	M.A (Economics/Population/Nepali/Sociology/English)	Entrance

6. Research & Publication

Birendra Multiple Campus promotes research activities through its Research Management Cell (RMC). The RMC was established on 2072/09/13 with the coordination of Prof. Dr. Harihar Paudyal. Other founding members included Prof. Dr. Krishna Prasad Paudyal, Prof. Arun

Kumar Shrestha, Assoc. Prof. Dr. Manoj Kumar Lal Das, Assoc. Prof. Dr. Dhaneshwar Bhattarai, Assoc. Prof. Dr. Krishna Prasad Sapkota, and Assoc. Prof. Dr. Ek Narayan Paudyal. The establishment of the cell was supported by the then Campus Chief Prof. Dr. Keshav Bhakta Sapkota.

Since its establishment, the RMC has been responsible for promoting and coordinating research activities on campus. It conducts programs such as mini research projects, seminars, workshops, talk programs, and journal publications with the support of internal resources as well as grants from UGC Nepal and other organizations. The campus has also provided a separate office and research meeting hall for the RMC to facilitate its activities.

The growth of research activities has been supported by successive campus leadership. Former Campus Chief Prof. Daya Ram Paudyal contributed to strengthening the research culture, and recent initiatives have also been supported by Assoc. Prof. Prem Sagar Bhandari to further expand research activities on campus.

Faculty members of Birendra Multiple Campus actively participate in research by conducting projects, publishing articles in academic journals, and presenting papers in conferences and seminars. Many of these studies address issues relevant to Nepal and the wider academic community, including topics such as environmental sustainability, social development, public health, and economic development.

Students are also encouraged to engage in research. They participate in research activities through course-based projects and independent studies, which help them develop analytical thinking, research skills, and academic writing abilities.

The campus also publishes several academic journals and publications. The BMC Journal of Scientific Research is a multidisciplinary peer-reviewed journal published by the Research Management Cell. Other publications include Vivek, published by the Tribhuvan University Teachers' Association, Pragyashree published by the Nepali Department, and the BMC Journal of Physics published by the Physics Department.

In addition, the campus regularly organizes seminars, workshops, and conferences to share research findings and encourage academic discussion among scholars and researchers.

To further promote research, the campus has introduced several incentives. Since 2077, the

Patron: Assoc. Prof. Dr. Prem Sagar Bhandari (Campus Chief)

Coordinator: Prof. Dr. Harihar Paudyal

Member: Prof. Dr. Krishna Prasad Paudyal

Member: Prof. Arun Kumar Shrestha

Member: Associate Prof. Dr. Dhaneshwor Bhattarai

Member: Associate Prof. Dr. Krishna Prasad Sapkota

Member: Associate Prof. Dr. Manoj Kumar Lal

Member: Associate Prof. Dr. Ek Narayan Poudel

campus has been providing the Best Thesis Award and the BMC Research Article Support Grant (RASG). Under this grant, a faculty member receives Rs. 5000 for each article published in SCImago indexed journals (Q1, Q2, Q3, or Q4). A teacher can receive support for up to two articles in a year.

The Research Management Committee at our Campus collaborates with departments and faculty members to provide research and publication opportunities, integrating research outputs into the teaching and learning process. We allocate a budget of 5% of the total income for research, which is distributed for journal publications, mini research projects for faculty and staff, seminar/workshop/conference/talk programs, faculty and staff educational tours, students' field visits/excursions, and interaction programs.

Our campus actively encourages research activities among faculty members and students. The RMC provide a grant of Rs. 30,000 per faculty member annually for mini-research projects, following the guidelines of the Campus Research Management Cell (RMC). Additionally, we cover registration and participation fees for faculty members attending orientations, seminars, and academic talks. Faculty members publishing in international journals indexed by the SJR are also eligible for a grant of Rs. 5,000 per article, up to a maximum of two articles per year.

Faculty members have the opportunity to conduct individual and collaborative research, as well as participate in national and international workshops and seminars. Some secure research funding through competitive national programs. While the campus does not offer

Ph.D. programs, faculty members supervise Ph.D. students under the respective dean's office

and support them with essential resources, including the library, seminar hall, and computer lab. Currently, around 25% of our faculty members are engaged in research, mentoring scholars, managing projects, and publishing articles. They also supervise students working on theses, dissertations, and project papers at the bachelor's and master's levels. Through their individual research efforts, faculty members contribute to national and international academic publications.

7. Student Enrollment

To analyze program-wise student enrollment, the total number of students on our campus are 6081 in 21 different programs in the 2081/82 academic year. The data that shows the number of students enrolled in each academic program is as follows:

Table 9: Total number of students enrolled in different academic programs, 2026

Faculty/ Institute	Male	Female	Total
BBS	1094	1047	2141
BSc (General/Geology/Microbiology)	345	614	959
B.Ed.	114	334	448
BA	150	178	328
B.Sc. CSIT	254	59	313
BIT	128	24	152
BCA	114	39	153
BBA	101	188	289
BICTE	61	25	86
PGDE	37	61	98
M.Sc. Chemistry	24	20	44
M.Sc. Physics	61	9	70
MA Sociology	108	128	236
MA Population	16	9	25
MA Nepali	16	15	31
Faculty/ Institute	Male	Female	Total
MA English	31	30	61
MA Economics	75	36	111
MBS	176	258	434
M.Ed.	30	72	102
Total	2935	3146	6081

7.1 Faculty Wise Enrollment

Based on the provided data, we can analyze the student enrollment based on faculties and the sex-wise distribution. It appears that the majority of students (47.10%) are enrolled in the

Management faculty, followed by Science and Technology (25.29%), Humanities (15.54%), and Education (12.07%). The figure demonstrated the number of students who are enrolled in faculties and sex wise distribution in the 2081/082 academic year as follows.

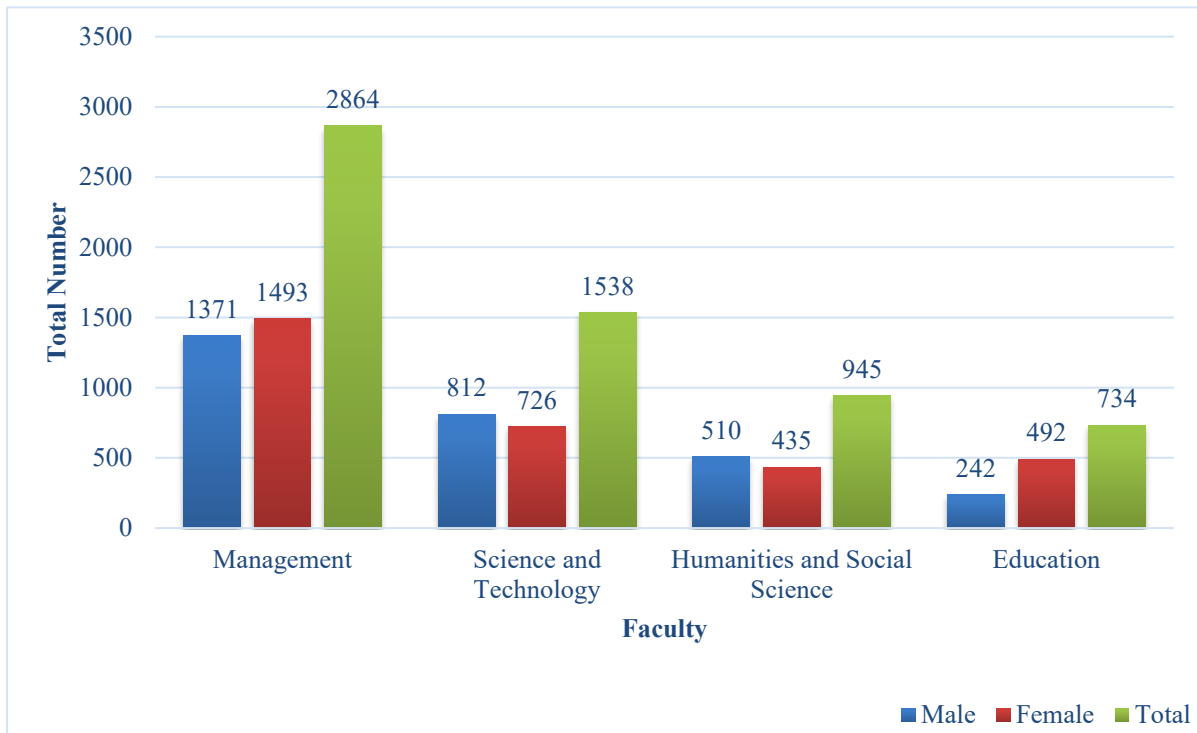


Figure 1: Number of students enrolled in different faculties with sex-wise distribution, 2026

7.2 Gender Wise Enrollment

The gender-wise enrollment data shows the distribution of students at Bachelor's and Master's levels at Birendra Multiple Campus. At the Bachelor's level, female students constitute 51.72% of the total enrollment, while male students account for 48.28%. Similarly, at the Master's level, female students represent 51.80%, whereas male students comprise 48.20% of the enrollment. This indicates that female students slightly outnumber male students at both academic levels.

In terms of level-wise enrollment, the majority of students are enrolled in Bachelor's programs (81.68%), while 18.32% of the students are enrolled in Master's programs. This shows that undergraduate programs have significantly higher enrollment compared to postgraduate programs at Birendra Multiple Campus.

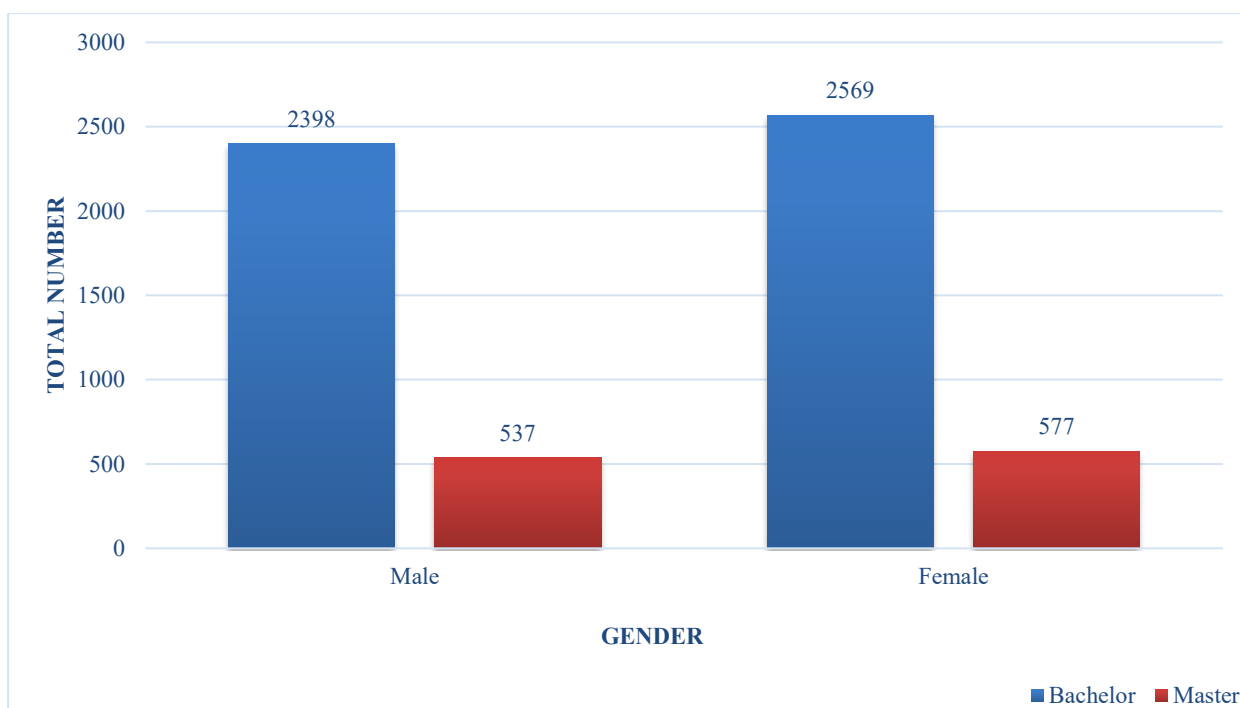


Figure 2: Number of students enrolled in different academic level with sex-wise distribution, 2026

7.3 Yearly and Semester-wise Enrollment

Birendra Multiple Campus operates both annual and semester-based academic programs. The annual system includes programs such as BBS, BA, B.Ed., and BSc (General, Geology, and Microbiology). In contrast, programs such as BBA, BCA, BICTE, BSc CSIT, PGDE, and all Master's level programs are conducted under the semester system.

The enrollment data shows that the majority of students are enrolled in annual programs, which account for 63.74% of the total student population. The remaining 36.26% of students are enrolled in semester-based programs.

The detailed enrollment information for both annual and semester systems is presented in Table 8.

Table 8: Students enrollment in yearly and semester program, 2026

Programs	Male	Female	Total	Percentage
Yearly	1703	2173	3876	63.74
Semester	1232	973	2205	36.26
Total	2935	3146	6081	

8. Student Graduation

A total of 1,137 students graduated from Birendra Multiple Campus in the academic year 2081/082. Among them, 880 students (77.40%) completed their studies at the Bachelor's level, while 257 students (22.60%) graduated from the Master's level. This indicates that the

number of graduates at the Bachelor’s level is significantly higher than at the Master’s level. At the Bachelor’s level, 461 female students graduated compared to 419 male students, showing a slightly higher number of female graduates. In contrast, at the Master’s level, 142 male students graduated, which is higher than the 115 female students. Overall, among all graduates, 576 were female and 561 were male, indicating that female graduates slightly outnumber male graduates during the academic year 2081/082.

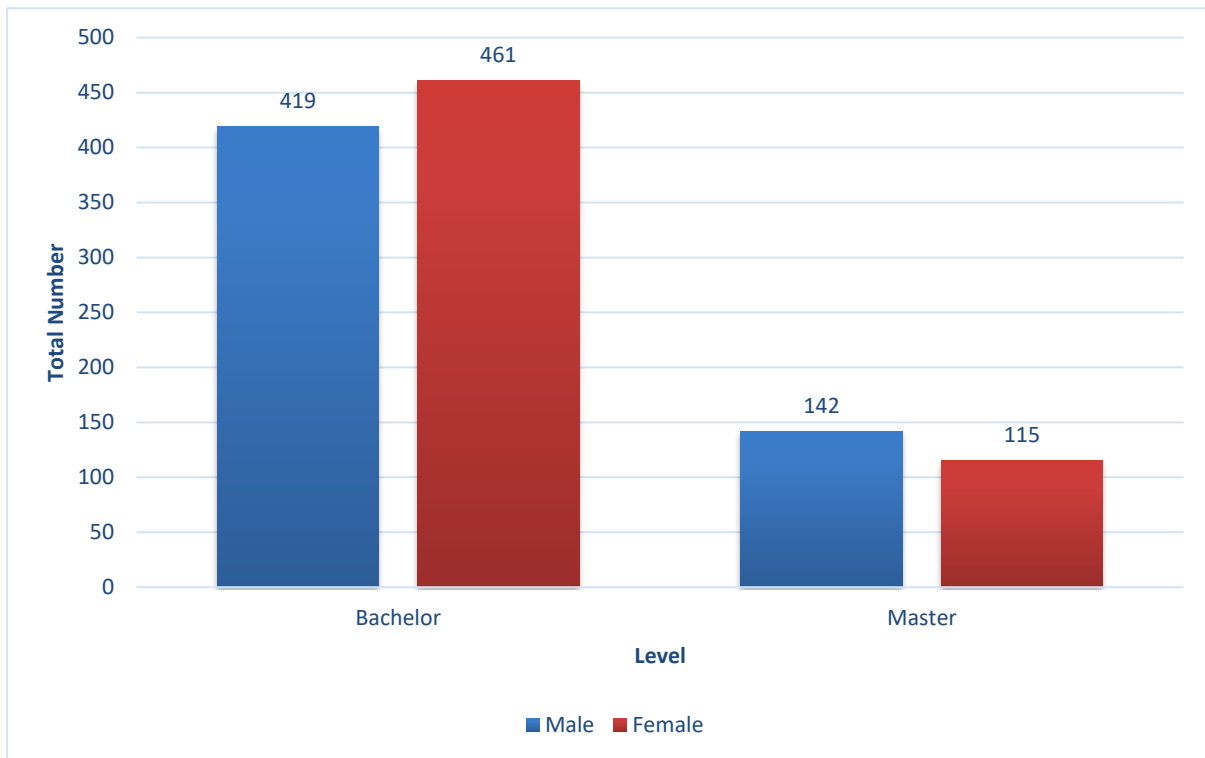


Figure 3 : Graduates from the campus

9. Student Scholarship

The term "Student Scholarship" typically refers to financial assistance provided to students to support their education. Scholarships are often awarded based on various criteria, such as academic achievement, extracurricular activities, and leadership potential, or specific talents. Scholarships can play a crucial role in helping students pursue their educational goals, as they can help cover tuition fees, books, living expenses, and other educational costs. In BMC we categorize into two types of scholarship: Free ship Scholarship and Merit Basis Scholarship.

Table 9: Number of Student Who Received Scholarship

Level	Free-ship		Merit-based Scholarship		Total
	Male	Female	Male	Female	
Bachelor	78	110	74	50	312
Master	28	39	10	3	80
Total	106	149	84	53	392

10. BMC Alumni Association

The Birendra Multiple Campus Alumni Association (2076) has been established to address the need for connecting former students of Birendra Multiple Campus, Bharatpur, Tribhuvan University, who are engaged in diverse fields both domestically and internationally. The association aims to contribute to the welfare of the campus and promote teaching, learning, and research culture, as well as ideological and intellectual diversity in higher education. Additionally, it strives to improve the physical structure of the campus and encourage collaboration among alumni. The objectives of the alumni association are as follows:

1. To organize former students of Birendra Multiple Campus and provide them with direct and indirect support to enhance the quality of education and research.
2. To leverage the capacities of members to develop and sustain Birendra Multiple Campus as a center of academic excellence.
3. To identify individuals with academic qualifications and use their knowledge and skills for academic advancement.
4. To raise awareness about social issues and increase national and social responsibility, facilitate discussions among members, and coordinate with students and various segments of society.
5. To establish an important forum for fostering harmony among members and ensuring the sustainability of the organization by including members' inherent talents, literature, arts, and expertise in various fields.

Committee members:

Patron - Assoc. Prof. Dr. Prem Sagar Bhandari (Campus Chief)

President - Mr. Baburam Ghimire

Vice President - Prof. Dr. Keshav Bhakta Sapkota

Vice President - Mrs. Rama Dhungana (Ghimire)

Immediate Past Patron- Prof. Daya Ram Poudel

General Secretary - Mr. Bamdev Ghimire

Secretary- Mrs. Hema Poudel

Treasurer - Mr. Shaligram Poudel

Assistant Treasurer - Mr. Man Harka Bagale

- Member - Mr. Bhabanath Sadaula
- Member- Mr. Prakash Chapagain
- Member - Mr. Lila Adhikari
- Member - Mr. Bijay Raj Neupane
- Member - Mr. Bishwanath Ojha
- Member - Mr. Krishna Prasad Kharel
- Member - Mr. Jagannath Dhakal
- Member - Mr. Shyam Raj Lamichhane
- Member - Mr. Ramesh Ghimire
- Member - Mr. Ganga Subedi
- Member - Mr. Jagannath Neupane
- Member - Mr. Basanta Lal Neupane
- Member - Mr. Narendra Kandanwa
- Member - Mrs. Sadhana Shrestha

11. Campus Committees Formation

Committees play a crucial role in our institutions, serving to address specific tasks, problems, or decision-making processes. The importance of different committee formations lies in their ability to enhance efficiency, collaboration, expertise, and democratic decision-making. Therefore, the Birendra Campus formed different committees as follows:

11.1 Campus Management Committee

The Campus Management Committee serves as the governing body responsible for overseeing the management and administration of the campus. It comprises key stakeholders, including faculty members, administrative staff, students, and, in some cases, external representatives. The committee works collaboratively to make essential decisions and establish policies that guide the campus's operations. The formation of the Campus Management Committee is as follows.

Campus Chief

Assoc. Prof. Dr. Prem Sagar Bhandari

President

Assistant

Member-

Campus

Bhojaraj Gauli

Secretary

Member

Chief	Kishor Chandra Ghimire	Member
Department Head	Prof. Dr. Krishna Prasad Paudyal	Member
		Member
Teachers	Prof. Dr. Harihar Paudyal	Member
	Assoc. Prof. Rajaram Acharya	Member
Bharatpur Metropolitan city ward no. 10 ward president	Prameshwor Khanal	Member
Parents	Mr. Bishnu Prasad Sapkota	Member
	Dr. Mati Prasad Dhakal	Member
Educationist	Prof. Dr. Ganesh Prasad Kharal	Member
	Mr. Uttam Lal Chuke	Member
Techer's Association (President)		Member
Staffs Association (President)		Member
Free Student Union (President)		Member
Administration Head		Member
Account Section Head		Member

11.2 Campus Executive Committee

The Campus Executive Committee is a governing body responsible for overseeing the executive functions and daily operations of a college or university campus. It manages administrative affairs, implements policies, and ensures the efficient functioning of various departments and services.

Campus Chief:	Assoc. Prof. Dr. Prem Sagar Bhandari	President
Teachers	Prof. Dr. Harihar Paudyal	Member
	Assoc. Prof. Rajaram Acharya	Member
Department Head		Member
Assistant Campus Chief		Member - Secretary

11.3 SAT Committee

The Student Activities and Traditions Committee is responsible for planning and organizing various student events and traditions on campus. It aims to enhance student engagement and promote a vibrant campus life. For the purpose of Quality Assurance & Accreditation (QAA) for UGC Nepal, and in the context of preparing the Self Study Report (SSR) Report, the following SAT committee has been formed with the respective members:

Coordinator: Prof. Dr. Harihar Paudyal

- Member: Prof. Daya Ram Poudel
- Member: Assoc. Prof. Surya Narayan Paudel
- Member: Asst. Prof. Dr. Kishor Chandra Ghimire
- Member: Asst. Prof. Dr. Shurendra Ghimire
- Member: Asst. Prof. Dr. Sudip Wagle
- Member: Asst. Prof. Dr. Govinda Dhungana
- Member: Asst. Prof. Dr. Jagannath Adhikari
- Member: Asst. Prof. Thaneshwor Sapkota
- Member: Teaching Asst. Padam Prasad Neupane
- Member: Pradip Subedi, Head Technical Assistant (IT)

11.4 Internal Quality Assurance Committee (IQAC)

The Internal Quality Assurance Committee is formed to enhance academic research as well as administrative activities in effective way. This committee supports to the SAT committee for quality assurance and accreditation (QAA) procedure.

Coordinator: Assoc. Prof. Dr. Prem Sagar Bhandari

- Member: Prof. Daya Ram Poudyal
- Member: Assistant Campus Chief Tika Ram Rijal
- Member: Assoc. Prof. Rajaram Acharya
- Member: Assoc. Prof. Dr. Ganga Raj Pokhrel
- Member: Deputy Administrator Rajendra Prasad Pokharel
- Member: Information Officer Mahendra Prasad Adhikari
- Member: Account Officer Saroj Raj Lamichhane
- Member: Alumni Association, President Baburam Ghimire
- Member: SQC Coordinator Anil Khatiwada
- Member Secretary: Pro. Dr. Harihar Paudyal

11.5 Academic Audit and Public Information Committee

The Academic Audit and Public Information Committee at Birendra Multiple Campus is dedicated to overseeing academic audits and managing public information. This committee plays a crucial role in upholding academic excellence, ensuring accountability, and promoting transparency within the institution. By fulfilling these responsibilities, it contributes to the campus's reputation and credibility. The committee has been formed with the following members:

Coordinator: Mr. Bhoj Raj Gauli, Assistant Campus Chief

- Member: Bhanu Bhakta Kandel, Assistant Professor
- Member: Mr. Mahendra Prasad Adhikari, Information Officer and Head
- Member: Mr. Prakash Acharya, Library
- Member Secretary: Mr. Bishnu Kandel, Academic and Examination Head

11.6 Birendra Campus Bulletin Publication Committee

Birendra Campus offers undergraduate and postgraduate programs across multiple disciplines, including humanities, science, commerce, and social education. The Birendra Campus Bulletin serves as a publication designed to share important information, updates, and news with students, faculty, staff, and the broader academic community. It features a diverse range of content, including academic announcements, campus news, research and publications, student activities, campus facilities, alumni updates, and community outreach initiatives.

The following committee has been formed with the respective members:

Coordinator: Dr. Kishor Chandra Ghimire, Assistant Campus Chief

- Member: Dr. Krishna Prasad Paudel, Professor
- Member: Dr. Krishna Prasad Sapkota, Associate Professor
- Member: Mr. Muralidhar Ghimire, Assistant Professor
- Member: Mr. Ramesh Kumar Shrestha, Assistant Professor
- Member: Mr. Mahendra Prasad Adhikari, Information Officer and Head (Library)
- Member: Mr. Pradip Subedi, Head Technical Assistant (IT)

11.7 Education Management Information System Committee

"Education Management Information System" committee plays a crucial role in facilitating data-driven decision-making and enhancing the overall efficiency and effectiveness of educational processes within Birendra Multiple Campus. By utilizing the EMIS effectively, the committee can contribute to improving the quality of education and administrative practices in the institution. The data collected through the EMIS helps in planning, decision-making, and policy formulation in the education sector.

Coordinator: Mr. Bednidhi Aryal, Assistant Campus Chief

- Member: Mr. Damodar Paudel, Teaching Assistant
- Member: Mr. Sushil Lamichhane, Teaching Assistant
- Member: Mr. Mahendra Prasad Adhikari, Information Officer and Head (Library)
- Member: Mr. Saroj Raj Lamichhane, Head (Account Section)

- Member: Mr. Shaligram Paudel, Computer Operator
- Member Secretary: Mr. Pradip Subedi, HA (IT)

11.8 Student Quality Circle

Birendra Multiple Campus has formed a Student Quality Circle to encourage active student participation in maintaining and improving the quality of academic and campus activities. The circle serves as a platform where students can share ideas, discuss issues related to teaching–learning practices, and suggest constructive measures for the overall development of the campus. It also helps strengthen communication between students and the campus administration.

The Student Quality Circle works in coordination with the Student Welfare Section and operates under the guidance of a faculty patron. Through regular discussions and feedback, the circle supports initiatives that promote a positive academic environment, student engagement, and continuous quality improvement in different campus programs and services.

The composition of the Student Quality Circle is as follows:

Coordinator: Mr. Anil Khatiwada, B.Sc. CSIT Student

Patron: Asst. Prof. Mr. Devi Prasad Paudel, Head, Student Welfare Section

Member: Mr. Aayush Subedi, MBS Student

Member: Mr. Aadarsha Devkota, B.Ed. Student

Member: Ms. Anisha Sapkota, BBA Student

Member: Mr. Saurav Raj Paudel, B.Sc. Student

11.9 Human Resource Management Committee

Birendra Multiple Campus has formed a Human Resource Management Committee to support the effective management and development of human resources within the campus. The committee plays an important role in ensuring proper coordination among academic, administrative, and technical staff. It also assists in identifying staff needs, recommending professional development opportunities, and promoting a productive and supportive working environment.

The committee works to strengthen institutional capacity by facilitating efficient utilization of human resources and supporting policies related to staff management, performance, and welfare. Through regular consultation and coordination, the committee contributes to maintaining transparency, accountability, and efficiency in human resource practices on campus.

The composition of the Human Resource Management Committee is as follows:

Coordinator: Asst. Prof. Bed Nidhi Aryal, Assistant Campus Chief

Member: Assoc. Prof. Dipak Regmi, HOD, Department of Economics

Member: Asst. Prof. Mahesh Ghimire, Director, BBA Program

Member: Asst. Prof. Prabha Marahatta

Member: Mr. Prakash Acharya, Technician

Member Secretary: Mr. Rajendra Prasad Pokhrel, Deputy Administrator

11.10 Grievance Re-Addressing Committee

Birendra Multiple Campus has established a *Grievance Redressing Committee* to address concerns and complaints raised by students, faculty members, staffs and other stake holders. The committee serves as an important mechanism to ensure transparency, accountability, and a supportive academic environment on campus.

The committee reviews grievances related to academic, administrative, and service-related matters and recommends appropriate actions to resolve them. By providing a formal platform for communication and problem-solving, the committee helps maintain mutual understanding and trust among all stakeholders of the campus.

The composition of the Grievance Redressing Committee is as follows:

Coordinator: Asst. Prof. Bhoj Raj Gauli, Assistant Campus Chief

Member: Asst. Prof. Devi Prasad Paudel, Campus Student Welfare Head

Member: Suraksha Regmi, Teaching Assistant

Member: Pradip Subedi, Head Technical Assistant (IT)

Member Secretary: Mahendra Prasad Adhikari, Library Head, Information Officer

11.11 Laboratory Management Committee

The Laboratory Management Committee has been formed to ensure the proper management, maintenance, and effective utilization of laboratory facilities available on campus. The committee oversees the operation of laboratories, supports the procurement and maintenance of laboratory equipment, and ensures that laboratory activities are conducted in an organized and safe environment.

The committee also works to improve laboratory resources and facilities so that students and faculty members can effectively conduct practical and research activities.

The composition of the Laboratory Management Committee is as follows:

Coordinator: Asst. Prof. Kishor Chandra Ghimire, Assistant Campus Chief

Member: Dipendra Adhikari, Assistant Professor

Member: Madan Phuyal, Teaching Assistant

Member: Pabitra Shrestha, Teaching Assistant, Coordinator B.Sc. Micrology

Member: Saroj Raj Lamichhane, Account Officer, Account Section Head

Member: Bishnu Prasad Kandel, Academic & Examination Section Head

Member Secretary: Santa Prasad Dhungana, Head Technical Assistant

11.12 Internal Examination and Evaluation Committee

Birendra Multiple Campus has formed an Internal Examination and Evaluation Committee to manage and monitor the internal examination system and evaluation process of the campus. The committee is responsible for ensuring the proper conduct of internal examinations, maintaining transparency in evaluation, and supporting academic departments in implementing the assessment system effectively.

The committee coordinates with different departments to organize examinations, manage internal assessment records, and maintain the quality and reliability of the evaluation process. Through its activities, the committee contributes to maintaining academic standards and strengthening the examination management system of the campus.

Coordinator: Bhoj Raj Gauli, Assistant Campus Chief

Member: Dr. Kishor Chandra Ghimire, Assistant Campus Chief

Member: Mr. Tika Ram Rijal, Assistant Campus Chief

Member: Mr. Bed Nidhi Aryal

Member: HODs of respective departments

Member: Mr. Saroj Raj Lamichhane, Account Section Head

Member: Mr. Pradip Subedi, Head Technical Assistant (IT)

Member: Mr. Prakash Acharya, Office Assistant

Member Secretary: Bishnu Kandel, Academic and Examination Head

12. Financial Management

12.1 Fixed Assets

The campus spans 19 bighas of land, with the main building situated on 10 bighas, which includes playgrounds and business establishments. An additional 9 bighas of land, located near the Police Training Centre on the bypass road, houses the semester system bachelor-level courses and M.Sc. programs in Physics and Chemistry. The campus features 15 buildings equipped with the necessary furniture and fixtures for classrooms, laboratories, a

library, a canteen, and staff quarters. It has a total of 175 computers, with 150 allocated to computer labs, 10 designated for the e-library, 1 in the Research Management Cell, and the rest in storage. Additionally, there are 34 laptops, with 12 distributed across different departments and 8 used in administrative sections. The campus also operates 20 multimedia projectors and 10 printers to support academic and administrative functions.

12.2 Operating Expenses and It's Trend

The campus has three income sources since it is a decentralized campus. Tribhuvan University provides only the budget for its regular programs; B.Sc. (General), B.A., M.A. (Economics) for the salary of corresponding teachers and staff related to the above-mentioned programs, which is the first source of income. The campus has to manage itself through its internal sources (second source) for conducting all the private programs such as B.Sc. (Microbiology, Geology), B. Sc. CSIT, BBA, BCA, BICTE, BBS, MBS, M.Sc. (Physics), M.Sc. (Chemistry), M.A. (Population, Nepali, English, Sociology/Anthropology). The third source of finance will be the rent from Business Buildings which are nearly to complete.

The income of the Birendra Multiple Campus is broken down into two categories: internal income and regular income. The total income is the sum of both internal and regular income for each fiscal year. The regular income includes the salary of permanent teaching staff, non-teaching staff, and other university-related income, while the internal income consists of revenue generated from the campus's own activities and sources. The total income represents the combined revenue from both internal and regular sources for each fiscal year.

Table 10: Internal and Regular Income and Expenditure of Campus

Fiscal Year	Income			Expenditure		
	Internal	Regular	Total	Internal	Regular	Total
2079/080	99,313,338.77	9,614,442.00	108,927,780.77	94,423,985.44	129,146,206.28	223,570,191.72
2080/081	84,391,409.04	6,662,350.09	91,053,759.13	102,185,445.84	125,542,638.54	227,728,084.38
2081/082	279,341,356.00	21,415,134.50	300,756,490.50	106,109,212.55	124,606,517.04	230,715,729.59

To perform a trend analysis of the income for Birendra Multiple Campus, the changes in income over the three fiscal years 2079/080, 2080/081, and 2081/082 were analyzed. The percentage change in income from one fiscal year to the next and the overall trend are presented below.

Percentage Change in Income from 2079/080 to 2080/081:

Internal Income: $((84,391,409.04 - 99,313,338.77) / 99,313,338.77) \times 100 \approx -15.03\%$

Regular Income: $((6,662,350.09 - 9,614,442.00) / 9,614,442.00) \times 100 \approx -30.71\%$

Total Income: $((91,053,759.13 - 108,927,780.77) / 108,927,780.77) \times 100 \approx -16.41\%$

Percentage Change in Income from 2080/081 to 2081/082:

Internal Income: $((279,341,356.00 - 84,391,409.04) / 84,391,409.04) \times 100 \approx 230.99\%$

Regular Income: $((21,415,134.50 - 6,662,350.09) / 6,662,350.09) \times 100 \approx 221.43\%$

Total Income: $((300,756,490.50 - 91,053,759.13) / 91,053,759.13) \times 100 \approx 230.32\%$

Overall Trend:

The income of Birendra Multiple Campus shows a declining trend from fiscal year 2079/080 to 2080/081, where internal income decreased by about 15%, regular income by 31%, and total income by about 16%. However, in the following fiscal year, the campus experienced a significant rise in income. From 2080/081 to 2081/082, internal income increased by around 231%, regular income by 221%, and total income by about 230%. The overall trend indicates that the campus faced a temporary decline in income in 2080/081, followed by a remarkable growth in 2081/082, reflecting a strong improvement in the financial position of Birendra Multiple Campus.

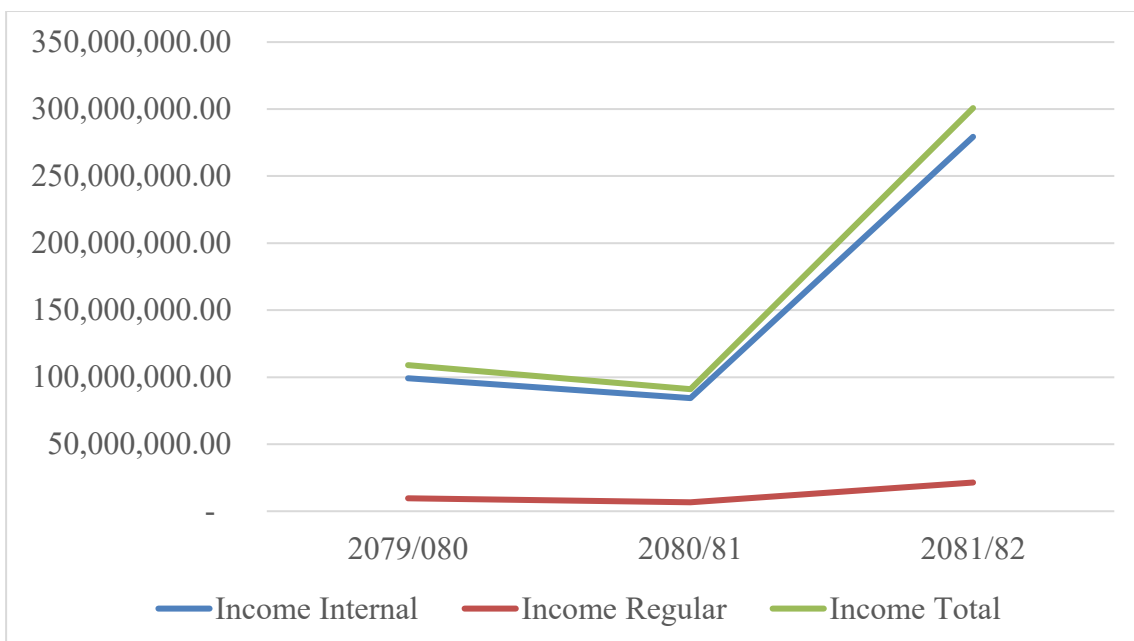


Figure 4: Trend Analysis of Number of Internal and Regular Income of Last 3 Year

Likewise, to perform a trend analysis of the expenditure for Birendra Multiple Campus, the changes in expenditure over the three fiscal years 2079/080, 2080/081, and 2081/082 were analyzed. The percentage change in expenditure from one fiscal year to the next is presented below.

Percentage Change in Expenditure from 2079/080 to 2080/081:

Internal Expenditure: $((102,185,445.84 - 94,423,985.44) / 94,423,985.44) \times 100 \approx 8.22\%$

Regular Expenditure: $((125,542,638.54 - 129,146,206.28) / 129,146,206.28) \times 100 \approx -2.79\%$

Total Expenditure: $((227,728,084.38 - 223,570,191.72) / 223,570,191.72) \times 100 \approx 1.86\%$

Percentage Change in Expenditure from 2080/081 to 2081/082:

Internal Expenditure: $((106,109,212.55 - 102,185,445.84) / 102,185,445.84) \times 100 \approx 3.84\%$

Regular Expenditure: $((124,606,517.04 - 125,542,638.54) / 125,542,638.54) \times 100 \approx -0.75\%$

Total Expenditure: $((230,715,729.59 - 227,728,084.38) / 227,728,084.38) \times 100 \approx 1.31\%$

Overall Trend:

From 2079/080 to 2080/081, the total expenditure increased slightly by about 1.86%. This increase was mainly due to an 8.22% rise in internal expenditure, while regular expenditure decreased slightly by about 2.79% during the same period.

From 2080/081 to 2081/082, internal expenditure continued to increase modestly by around 3.84%, whereas regular expenditure showed a small decline of about 0.75%. As a result, the total expenditure increased slightly by about 1.31%.

Overall, the trend in expenditure for Birendra Multiple Campus over the three fiscal years shows a gradual increase in internal expenditure with a slight decline in regular expenditure, while total expenditure remained relatively stable with only small increases each year. This indicates that the campus expenditure has been relatively consistent during this period.

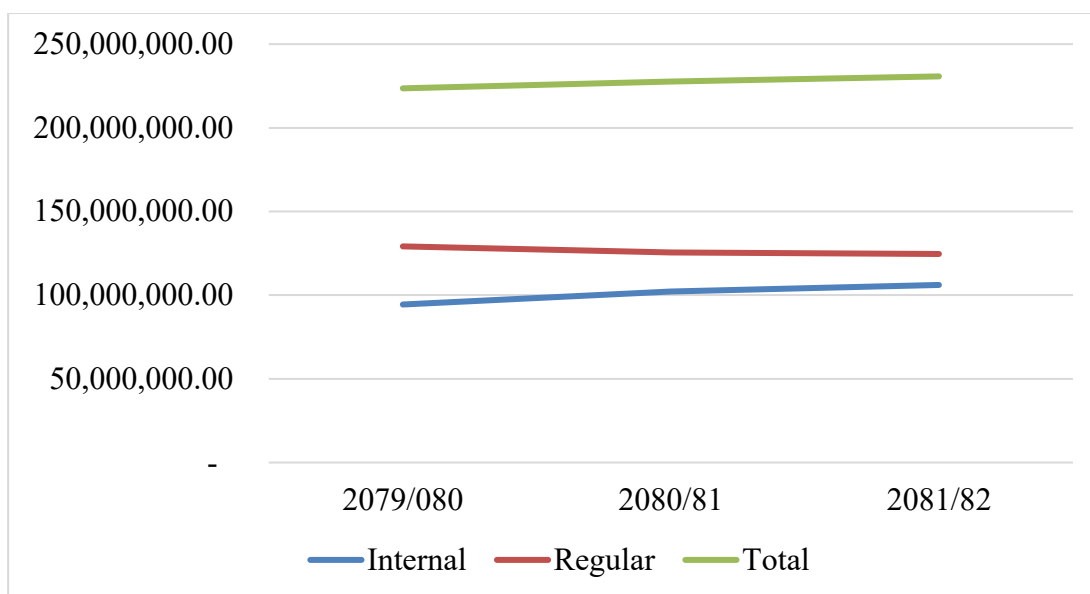


Figure 5: Trend Analysis of Number of Internal and Regular Expenditure of Last 3 Year

12.3 Accounting System

The income of the campus is directly deposited to the bank by concerned stakeholders and every payment for expenditure is made by cheques only. The campus has adopted the double-entry bookkeeping system. All the expenditures and budgetary expenses are made according to TU economic rules and regulations. The audit of the income and expenditure of the campus is made each year. Internal and external auditors are appointed by T.U. and Office of the Auditor General respectively. The audit report of the campus reflects all the relevant economic transactions.

13. Bases for the financial stability of the campus

Now the campus has adopted the following bases for its economic stability and sustainability

- Regular annual budget from TU (Salary for permanent staff)
- Income from Self Sustain programs
- Donation, endowment receiving from external agencies.
- Adaptation of decentralization policy
- Cost-benefit analysis in each department
- Economic discipline and transparency

14 SWOT Analysis of Birendra Multiple Campus

14.1 Strengths of the Campus

- Committed and devoted stakeholders in the process of teaching and learning

- Highly Qualified Human Resources for Higher education in Chitwan
- Regularity in its operation
- Increasing trend of students in subjects like Management, Science, Education & Humanities faculties.
- No. of Ph.D. holders are increasing rapidly.
- Modern Library building with a sufficient number of books and periodicals where students can receive books for 15 days.
- E-library with Wi-Fi Zone facility.
- Internal scholarship facilities for students
- Campus has 19 bighas of land which can be utilized for its further development and its expansion.
- Ample space to make different departmental buildings for different programs.
- Opportunity to construct Business Complex (it might be the income generating source) as its land is adjoining the highway.
- Only one campus has a master's degree with 9 subjects (Management, Physics, Chemistry, Sociology, Major English, Nepali, Population, and Economics and MEd EPM, English, Nepali, Health) in this region.
- Sufficient Playground
- Peaceful educational environment
- Easily accessible location

14.2 Weakness of the Campus

- Incomplete compound wall of the Campus
- Insufficient classrooms for increasing students
- Lack of National & International Journal & magazines
- Lack of screening mechanism in enrollment in some subjects
- Lack of modern equipment and teaching and learning materials.
- Lack of seminar and conference rooms.
- No regular faculty development programs like seminars and conferences
- No sufficient grant was allocated for the research.
- Less training is granted for the administrative staff regularly.
- Lack of motivational factors for quality improvement.
- Political interference which disturbs the classes

- Lack of well information center
- Traditional administrative system

14.3 Opportunities of the Campus

- Opportunity for being selected for 2nd Higher Education Project (SHEP) under UGC
- Highly favorable situation for conducting further educational programs (like M.Phil and Ph.D.) in a different program
- Opportunity to expand the programs vertically and horizontally in different subjects.
- Opportunity to magnetize students from its adjoining area (as it is centrally located and lies at the midway of the east-west national highway).
- Opportunity to conduct different consultancy and research work for different factories and business houses.
- Opportunity to bring industry people into the classroom to give the knowledge of the real respective discipline.

14.4 Threats of the Campus

- Harmonizing the different interests of stakeholders for the development of the campus
- Coordinating and managing people with different thoughts and opinions.
- Increasing unnecessary involvement and concern of stakeholders on campus
- Difficulty in maintaining a peaceful & secure environment due to the lack of a compound wall.
- Challenge of getting financial resources & mobilizing them in time.
- Lack of HR for new programs
- Great threat to quality improvement due to the not maintaining the university calendar.
- Lack of permanent teachers and staff
- Delay in permission to appoint teachers and staff by the central office.
- Delay in providing budget by the central office.

15 Foundation and priorities for the institutional development of Campus

Considering the above strength, weaknesses, opportunities, and threats of the Campus, the following new activities and programs are in priority list.

- Two new programs, MBA in Management and M.Sc. in Computer Science, will be added.
- College focuses on providing practical education and relevant training that prepares

students for the demands of the professional world. It strives to establish strong connections with industries, businesses, and organizations to facilitate internships, placements, and job opportunities for its graduates.

- Organize seminars, workshops, and conferences on various topics to provide a platform for students and faculty to present their research work.
- Collaborate with external organizations to conduct joint research projects and initiatives.
- Establish and promote professional courses like BBA, B.Sc. CSIT, BIT, BICTE, BCA, etc., have good employment prospects.
- Explore public-private partnerships to fund and expand income-generating programs.
- Regularly inspect and maintain campus buildings, infrastructure, and facilities to ensure they are safe and in good condition.
- Sufficient encouragement & incentives are to be provided for research work.

Some Photo Glimpse









